

Interprofessional & Integrated Training/Patient Centered Medical Home Project

Orientation Meeting

Pat Matthews-Juarez, PhD, Project Director

HRSA Funded Grant # TOBHP 3004

September 13, 2016

Goals and Objectives

Goals

Goal 1: Create the infrastructure for transforming the existing curriculum in the School of Medicine (SOM) and the School of Dentistry (SOD) by integrating the PCMH model as a module to expand and enhance the PCMH training.

Goal 2: Design and Integrate the PCMH model in the training of residents and students by using an inter-professional curriculum.

Goal 3: Implement the PCMH model through module training activities in the College and across all schools.

Objectives

1. Develop and establish a PCMH Steering Committee in Years 1-5 to design and implement a comprehensive PCMH training program for 420 medical students, 200 dental students and 72 residents (18 family medicine/45 medicine/9 general practice).
2. Integrate 5 components of the PCMH model into the medical and dental student curriculum in Years 1-2 and into the curriculum of the medicine and dental residents in Year 1 of the project.
3. Implement the PCMH module in the medical and dental schools training in Years 3-5 for 420 medical students, 200 dental students and 72 residents (18 family medicine and 45 medicine and 9 general practice residents).

Six Components/Elements of Principles and Practice of the PCMH Model

1. Access and continuity of care;
2. Team-based care and care coordination;
3. Care management using evidence-based practice;
4. Patient self-care support and community resources;
5. Population health management; and
6. Continuous quality improvement.

Typical Block for Practice Management and Community Health

Practice Management Grid				
Monday	Tuesday	Wednesday	Thursday	Friday
Work with Project Manager on one Guideline update	Work with case manager on a QA project of a chronic disease or health maintenance	Work with Chair of the evidence-based review	Staff front desk/Billing and Coding Training	Web portal staffing
Weekly Meeting with TennCare Staff/ train, review practice indicators	Continuity Clinic	Continuity Clinic	Continuity Clinic	Practice Management Project
Community Medicine Grid				
Monday	Tuesday	Wednesday	Thursday	Friday
Work with Project Director on one Guideline update	Work with case manager on a QA of a chronic disease or health maintenance	Work with Chair on 1 evidence-based review	Community Assessment and Principles of Community Based care	Project Work
Continuity Clinic	Continuity Clinic	Community health center	Community health center	Continuity Clinic

Monitoring Implementation

- Formative and summative evaluation processes will be incorporated into the planning and development of objectives 1-3.
- The evaluation results will feed into the overall evaluation for the project.
- The processes will include course evaluations by faculty and a separate program evaluation by an outside evaluation expert in this field.
- Dr. Paul Juarez will be the Lead Evaluator.

SCHOOL OF MEDICINE

Patricia Matthews-Juarez, PhD
Paul Juarez, PhD
Marquetta Faulkner, MD, MBA (Dean)
Leonard Webster, MD (Interim Chair)
Xylina Bean, MD (Chair, Pediatrics)*
Susanne Tropez-Sims, MD
Millard Collins, MD (Chair, Family Medicine)
Medhat Kalliny, MD (Residency Director)
Ruth Stewart, MD
Monique Bennerman, MD
Duane Smoot, MD (Chair, Medicine)*
Richmond Akatue, MD (Residency Director)
Linda Redd, MBA
Zuay Thompson, MBA
Xiaoran Xu, MS
Renee Frazier, MHSP
Stephanie Bailey, MD

*Associate Director

SCHOOL OF DENTISTRY

Cherae Farmer-Dixon, DDS, MSPH, Dean
Gerald Davis, DDS
Leslie Halpern, MD, DDS (Residency Director)
Machelle Thompson, MSPH (Liaison Clinical Affiliations)
Daphne Young, DDS (Residency Director)
Sandra Harris, DDS
Charles Williams, DDS* (Chair/Oral Maxillofacial)

STEERING COMMITTEE

Marquetta Faulkner, MD
Cherae Farmer-Dixon, DDS
Millard Collins, MD
Duane Smoot, MD
Charles Williams, DDS
Leslie Halpern, MD, DDS
Daphne Ferguson-Young, DDS
Medhat Kalliny, MD
Richmond Akatue, MD
Stephanie Bailey, MD

CURRICULUM COMMITTEE

Richmond Akatue, MD
Gerald Davis, DDS
Digna Forbes, MD
Sandra Harris, DDS
Medhat Kalliny, MD
Machelle Thompson, MSPH
Leonard Webster, MD
Daphne Young, DDS

EVALUATION PLAN

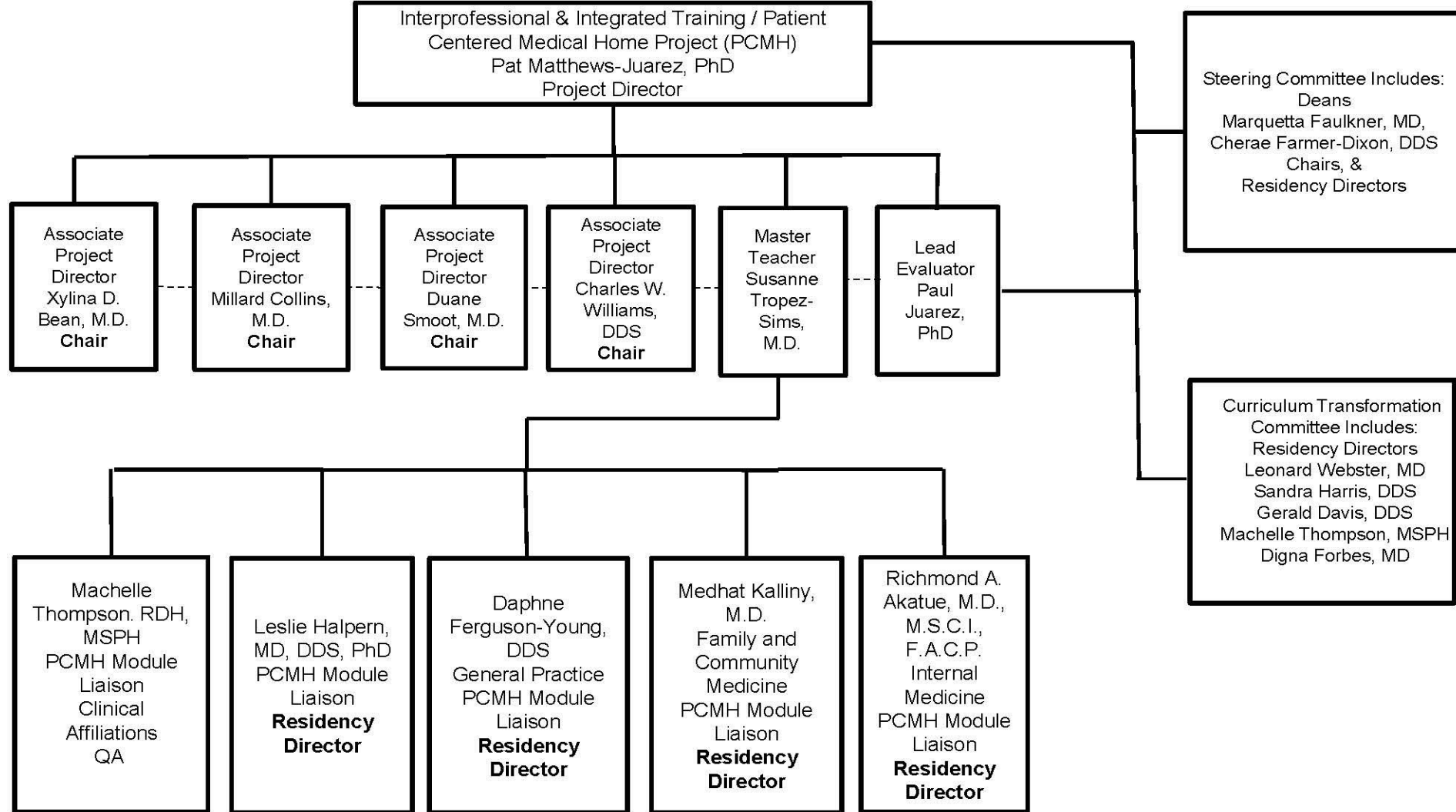
Using qualitative and quantitative evaluations, the overall goal is to track and monitor outcomes for

1. Students;
2. The Project; and
3. The Program in totality

Paul D. Juarez, PhD, is the lead evaluator. We will use an external evaluator for the Project as well.

Attachment 3 Organizational Chart

Integrated Training / Patient Centered Medical Home Project



Overall Intent and Outcomes

This comprehensive training project will directly:

1. Lead to trained Meharry graduates who elect to work in PCMHs in underserved areas of Nashville,
2. Transform the chronic disease care model to align with the components and principles of the PCMH model.
3. Increase the number of diverse health care providers who meet the needs of vulnerable populations living in Nashville and similar communities.
4. Improve comprehensive care and chronic disease management for the medically underserved in Nashville and other communities.

Thank you